

Our Academies in Derby

Cavendish Close Junior - 01332 672338
info@cavendish.theharmonytrust.org

Village Primary - 01332 766492
info@village.theharmonytrust.org

Reigate Park Primary - 01332 298969
info@reigate.theharmonytrust.org

Ash Croft Primary - 01332 764160
info@ashcroft.theharmonytrust.org

Cottons Farm Primary - 01332 771370
info@cottonsfarm.theharmonytrust.org

Alvaston Junior - 01332 571321
info@alvaston.theharmonytrust.org

Lakeside Primary - 01332 571485
info@lakeside.theharmonytrust.org

Hackwood Primary - 01332 985466
info@hackwood.theharmonytrust.org



How to contact the FST

Family Support Team Office
Village Primary Academy
155 Village Street
Derby
DE23 8DF

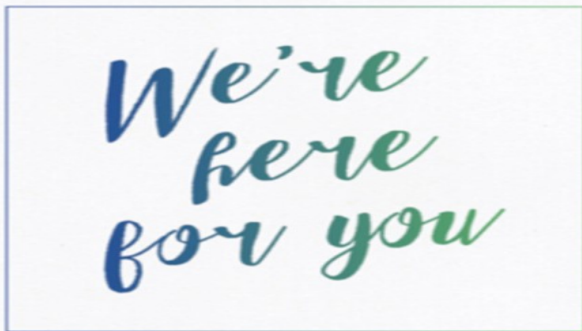
Phone: 01332 766492
Email:
pdowd01@theharmonytrust.org

Welcome to Your Family Support Team (FST)



THE HARMONY TRUST
BELIEVE • ACHIEVE • SUCCEED

Improving Outcomes for Children



What is Family Support?

It's true what they say, "children don't come with a handbook", and I totally agree, nor do they have an off switch when we are feeling overwhelmed as parents. Children are very rewarding but can be hard work. It's ok to admit you are struggling as a parent and this does not mean you have failed yourself or your child. What is probably does mean, is you could do with some advice and tips on how best to support your child through whatever it is they may be struggling with.

What we can do for you...

Our service can offer the following;-

- Telephone or one to one support.
- In school direct work with your child to support with behaviours, worries, bereavement, social skills and many more.
- Direct work with parents to support their parenting in the home.
- A 6 week free child behaviour management provision for parents to offer help, guidance and ideas for sustainable changes making yours, your child's and your families home life more manageable and happy!
- An holistic whole school approach ensuring you feel supported by FST, your child's teacher and the school senior leadership team.
- Help and support for domestic violence and abuse—remember this can include, but is not limited to, the following: emotional, physical, sexual, coercive, financial, harassment and stalking and online or digital abuse.
- Supporting you to access others services such as benefit welfare check, housing issues, adult education, counselling services, and health services.
- And much, much more, just ask!

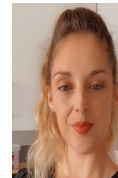
Meet the team...



Hi, my name is **Paula Dowd**, I am the Family Support Manager. I believe it is a strength to be able to ask for help and as such, myself and the team are passionate about helping you to make positive and sustainable changes for your family.

Between us, we have a vast amount of experience working with children and their families from babies to teenagers meaning we can offer you, your child and your immediate family a great level of support. If you're not sure if we can help, then please just ask for a phone call through the reception of your school and we will be happy to help. We look forward to hearing from you!

Hi, my name is **Mel Squire**. I am the new Family Support Worker. You will see me out and about at all of the academies.



Please give me a wave and say 'Hi'. I am more than happy to chat about anything you may need support with. I have worked with children and their families for many years in a variety of roles including: nursery nurse, SENDCO, preschool manager, safeguarding lead and teaching assistant. If you need a

casual chat or would like to arrange a meeting with me you can ask your academy staff to contact me and I will get in touch with you as soon as I can. I'm here to help parents, carers and children in any way that I can.



Happy Children, Happy Parents, Happy Life